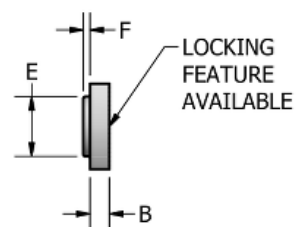
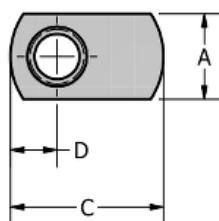


Spot Weld Nut - Single Tab: SN 2113



Thread Size	1/4-20
Width (in)	1/2
Thickness (in)	1/8
Length (in)	13/16
A (in)	0.500
Tol A (in)	+0.020 / -0.005
B (in)	0.125
Tol B (in)	+0.003 / -0.003
C (in)	0.813
Tol C (in)	+0.014 / -0.016
D (in)	0.250
Tol D (in)	+0.015 / -0.015
E (in)	0.297
Tol E (in)	+0.010 / -0.010
F (in)	0.050
Hole In Sheet (in)	0.312
Material	C1010 High-Welding Quality, Low Carbon Steel
Finish	Plain, Unless Specified
Threads	Unified Standard Class 2B ASME B 1.1-2003



BUCKEYE FASTENERS COMPANY

DISTRIBUTED BY

ADVANCE 
COMPONENTS

advancecomponents.com

972-446-5500